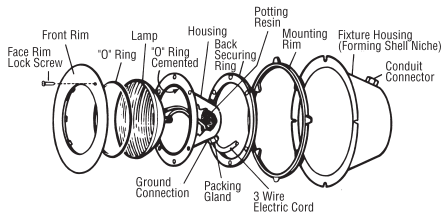




# Underwater Lights & Accessories

## REPLACEMENT PARTS

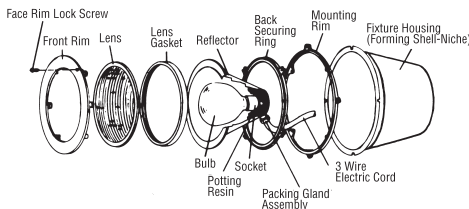
### Cat. Nos. SP0500, 0501, 0502 Sealed Beam Series



**SP0500, 0501, 0502**

Part No.	Description	Ctn. Qty.
SPX0501Z1	Bulb, 100W, 12V, PAR 56 WFL	18
SPX0502Z1	Bulb, 300W, 12V, PAR 56 WFL	12
SPX0501HJ	O-Rings, Large and Small (Set), Special Hi-Temp	10
SPX0503Z20A	Face Rim Lockscrew with Washer	10
SPX0503XA	Spring Clip with Screw (1958-1965)	10
SPX0502A	Front Rim, CPB	10
SPX0502Z66	Securing Rim Screw (Set of 6)	10

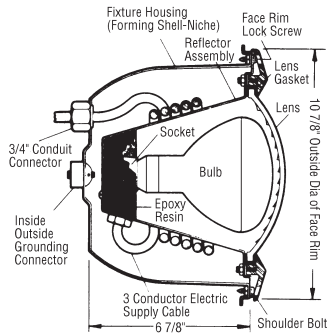
### Cat. Nos. SP0503 (400W, 120V), SP0504 (500W, 110V)



**SP0503, 0504**

Part No.	Description	Ctn. Qty.
SPX0503Z5	Bulb, 400W, 120V, G/FL	12
SPX0504Z4	Bulb, 500W, 120V, R-40 Mogul Base (1958-1970)	12
SPX0504Z7	Bulb, 500W, 120V, R-40 Medium Base	12
SPX0503Z2C	Lens Clear (Tempered), 8 3/8"	10
SPX0503W	Lens Gasket, Special Hi-Temp	10
SPX0503Z20A	Face Rim Lockscrew with Washer	10
SPX0503XA	Spring Clip with Screw (1953-1965)	10
SPX0503A	Front Rim, CPB	10
SPX0503Z76	Securing Rim Screw (Set of 6)	10

### Cat. Nos. SP0540, 0541, 0542, 0543 (StarLite Series)



**SP0540, 0541, 0542, 0543**

Part No.	Description	Ctn. Qty.
SPX0540A	Molded Face Rim with Studs	5
SPX0540Z1	Lens - Clear 7 9/16" Diameter (Tempered)	12
SPX0540Z2	Lens Gasket, Special Hi-Temp	10
SPX0540Z16A	Face Rim Lockscrew with Fastener	10
SPX0555Z2	Lower Mounting Screw	10
SPX0555Z3	Set Screw for Ground Connector	10
SPX0540Z4A	No. 10-24 Hex. Nut with Washer for Face Rim Studs	10
SPX1392G10	Washer - Pkg. of 10	10
SPX0510A	100W, 12V, Bulb R-30	12
SPX0541Z1	300W, 12V, Bulb R-40	12
SPX0542Z4	300W, 120V, Bulb R-40	12
SPX0504Z7	500W, 120V, Bulb R-40	12

# Underwater Lights & Accessories

REPLACEMENT PARTS (continued)



## Cat. Nos. SP0560, 0570 (DuraLite Series)

Part No.	Description	Ctn. Qty.
SPX0580A1	Molded Face Plate (for 570 Series with N Suffix)	5
SPX0570A	Molded Face Rim with Integral Flange (Smooth)	5
SPX0560A*	Molded Face Rim with Integral Flange (Pattern)	5
SPX0560EA	Clamp Screw with Nut and Washer	10
SPX0540Z16A	Retainer Screw Set	10

All other parts same as standard SP0580 Astrolite Series.

\*Replace with SPX0570A

## Cat. Nos. SP0580, 0580S (AstroLite Series)

Part No.	Description	Ctn. Qty.
SPX0580A	Molded Face Rim	10
SPX0580AS	Stainless Steel Face Rim	10
SPX0580Z2	Lens Gasket	10
SPX0580B	Assembly Clamp with Screw, Nut & Washer (SP0580 Series)	5
SPX0580BS	Assembly Clamp with Screw, Nut & Washer (SP0580S Series)	5
SPX0580Z3	Face Rim Lockscrew with Fastener – SP580S	10
SPX0580Z1	Face Rim Lockscrew with Fastener – SP580	10
SPX0584Z2	120V, 400W Bulb – Incandescent	12
SPX0540Z1B	Blue Lense	10

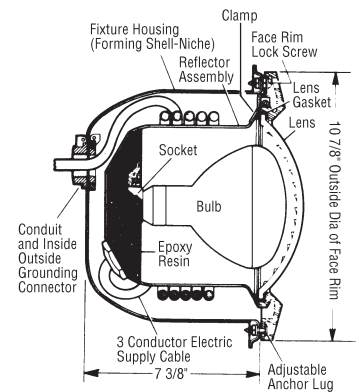
All other parts same as Starlite Series.

## Cat. Nos. SP0590S, 0590HS (AstroLite II Series)

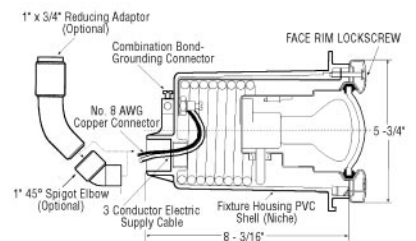
Part No.	Description	Ctn. Qty.
SPX0590A	Stainless Steel Face Rim	5
SPX0590E	Snap-on Plastic Face Rim	50
SPX0590Z1	Lens	5
SPX0590G	Lens Gasket	10
SPX0590Z2A	Face Rim Lockscrew with Fastener	10
SPX0550Z4	12V, 100W Bulb – Incandescent	12
SPX0551Z4	120V, 100W Bulb – Incandescent	12
SPX0590H	12V, 75W Bulb – Halogen	12
SPX0591H	120V, 100W Bulb – Halogen	12
SPX0590K	Blue and Red Replacement Lens Cover Kit	12
SPX0592H	120V, 250W Bulb – Halogen	12
SPX0608C	Face Ring Assembly	10
SPX0608G	Gasket	10
SPX0608CP	Card Seal Kit	10

## Cat. Nos. SP0520, 0530 (ColorLogic Series)

Part No.	Description	Ctn. Qty.
SPX0525AS	Stainless Steel Face Rim (Large)	10
SPX0533AS	Stainless Steel Face Rim (Small)	10
SPX0525Z1	Screw Set for Stainless Steel Face Rim (Large)	10
SPX0533Z1	Screw Set for Stainless Steel Face Rim (Small)	10
SPX0525LED100	Replacement, ColorLogic 2.5, Pool, 120V, 100 ft.	10
SPX0525SLED100	Replacement, ColorLogic 2.5, Pool, 120V, 100 ft., Stainless Steel	10
SPX0533LED100	Replacement, ColorLogic 2.5, Spa, 120V, 100 ft.	10
SPX0533SLED100	Replacement, ColorLogic 2.5, Spa, 120V, 100 ft., Stainless Steel	10



SP0560, 0570 SERIES

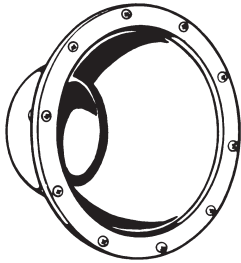


SP0590 SERIES

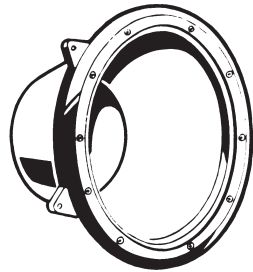


# Underwater Lights & Accessories

REPLACEMENT PARTS (continued)



SP0506



SP0507, 0607

## Cat. Nos. SP0600, 0607, 0608U PVC Niches

Part No.	Description	Ctn. Qty.
SPX0600G	Grounding Bracket Assembly	10
SPX0555Z2	Bottom Mounting Screw (600 and 607)	10
SPX0507A1	Front Frame, ABS, White (607)	5
SPX0506D	Gasket (607)	10
SPX0507D	Back Retaining Rim (607)	5
SPX0607Z1A	Screw Set	10
SPX0608C	Face Ring Assembly	10
SPX0608G	Gasket	10
SPX0608CP	Card Seal Kit	10

## Cat. No. SP0601 PVC Niche

Part No.	Description	Ctn. Qty.
SPX0601BKIT	Top Bottom Mounting Bracket with Screws	10

## Cat. Nos. SP0506 and SP0506UV Shell Assemblies

Part No.	Description	Ctn. Qty.
SPX0506A	Front Frame, CPB	1
SPX0506D	Gasket	10
SPX0506Z1A	Screw Set	5

## Cat. No. SP0507 Shell Assemblies

Part No.	Description	Ctn. Qty.
SPX0507A1	Front Frame, ABS (White)	5
SPX0506D	Gasket	10
SPX0507D	Back Retaining Rim	5
SPX0507Z1KIT	Long and Short Screw Set, Self-Tapping (SP0507)	10

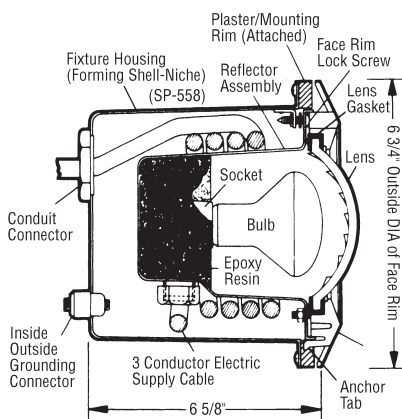
## Cat. Nos. SP0550, 0551 (StarLite II Series)

Part No.	Description	Ctn. Qty.
SPX0550Z2	Lens Gasket, Hi-Temp	10
SPX0540Z4A	No. 10-24 Hex. Nut with Washer for Studs	10
SPX0555Z3	Set Screw for Ground Connector	10
SPX0550Z4	100 Watt, 12 Volt Bulb, R-20	10
SPX0551Z4	100 Watt, 120 Volt Bulb, R-20	10

## Cat. No. SP056525A – Elite Above-Ground Light

Part No.	Description	Ctn. Qty.
SPX0565Z1	Replacement 12 volt/50 watt halogen lamp with reflector	20
SPX0565BA	Lens	1
SPX0565G	Gasket	10
SPX0565L	Color Filter Kit (3 lenses)	5

(sets of 3)



SP0550

Lighting